

Customer :

customer

Customer part :

customer part

Comment :

Comment

S1=3.9

S2=4.43

Tmax=460

Tp S2=499.0

PI=0.47

HI=102

Sample =1712.30

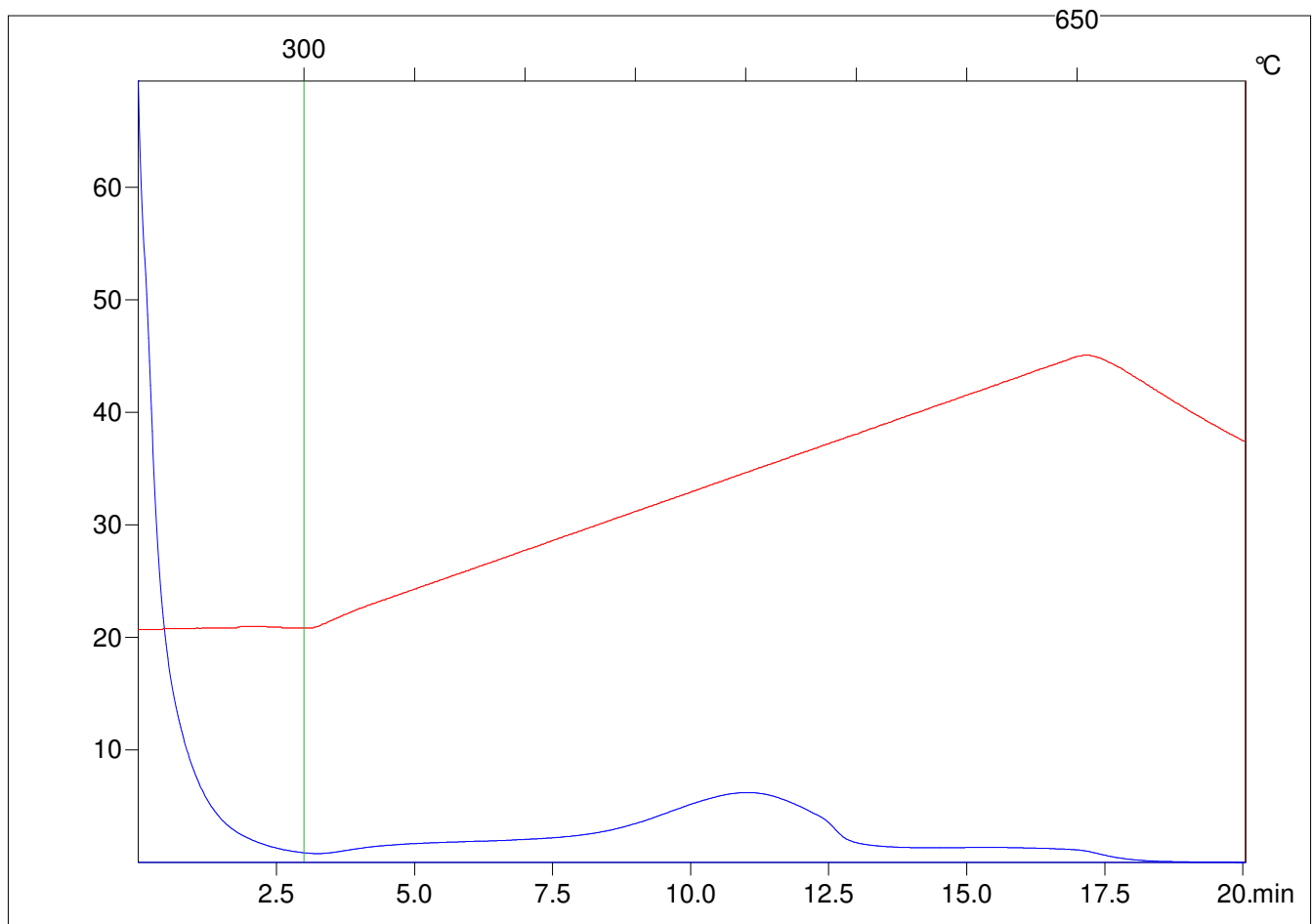
Method =Bulk Rock

Cycle=Basic

KFID(10\*9)=1444

Qty =71.0

TOC=4.34



C:\VINC\PK2\_1792\PK009.R00 : FID pyrolysis graphic

State

Pyro Status

Oxi Status